



Central headquarters:  
ul. Biała Droga 31, 34-122 Wieprz

Service:  
ul. Skotnica 120, 32-652 Bulowice

phone: +48 33 875 93 80  
e-mail: [serwis@techsterownik.pl](mailto:serwis@techsterownik.pl)

EN

EU-F-2z v2  
USER'S MANUAL

TECH  
CONTROLLERS

TECH  
CONTROLLERS

## WARRANTY CARD

TECH company ensures to the Buyer proper operation of the device for the period of 24 months from the date of sale. The Guarantor undertakes to repair the device free of charge if the defects occurred through the manufacturer's fault. The device should be delivered to its manufacturer. Principles of conduct in the case of a complaint are determined by the Act on specific terms and conditions of consumer sale and amendments of the Civil Code (Journal of Laws of 5 September 2002).

**CAUTION! THE TEMPERATURE SENSOR CANNOT BE IMMERSSED IN ANY LIQUID (OIL ETC). THIS MAY RESULT IN DAMAGING THE CONTROLLER AND LOSS OF WARRANTY! THE ACCEPTABLE RELATIVE HUMIDITY OF THE CONTROLLER'S ENVIRONMENT IS 5÷85% REL.H. WITHOUT THE STEAM CONDENSATION EFFECT. THE DEVICE IS NOT INTENDED TO BE OPERATED BY CHILDREN.** The costs of unjustifi able service call to a defect will be borne exclusively by the buyer. The unjustifi able service call is defi ned as a call to remove damages not resulting from the Guarantor's fault as well as a call considered unjustifi able by the service after diagnosing the device (e.g. damage of the equipment through the fault of the client or not subject to Warranty), or if the device defect occurred for reasons lying beyond the device.

In order to execute the rights arising from this Warranty, the user is obliged, at his own cost and risk, deliver the device to the Guarantor along with a correctly fi lled-in warranty card (containing in particular the sale date, the seller's signature and a description of the defect) and sales proof (receipt, VAT invoice, etc.). The Warranty Card is the only basis for repair free of charge. The complaint repair time is 14 days.

When the Warranty Card is lost or damaged, the manufacturer does not issue a duplicate.

.....  
seller's stamp

.....  
date of sale

## SAFETY

Before using the device for the first time the user should read the following regulations carefully. Not obeying the rules included in this manual may lead to personal injuries or controller damage. The user's manual should be stored in a safe place for further reference. In order to avoid accidents and errors it should be ensured that every person using the device has familiarized themselves with the principle of operation as well as security functions of the controller. If the device is to be sold or put in a diff erent place, make sure that the user's manual is there with the device so that any potential user has access to essential information about the device.

The manufacturer does not accept responsibility for any injuries or damage resulting from negligence; therefore, users are obliged to take the necessary safety measures listed in this manual to protect their lives and property.

## ⚠ WARNING

- The device should be installed by a qualified electrician.
- The regulator is not intended to be used by children.
- It is a live electrical device. Make sure the regulator is disconnected from the mains before performing any activities involving the power supply (plugging cables, installing the device etc.).
- Any use other than specified by the manufacturer is forbidden.



We are committed to protecting the environment. Manufacturing electronic devices imposes an obligation of providing for environmentally safe disposal of used electronic components and devices. Hence, we have been entered into a register kept by the Inspection For Environmental Protection. The crossed-out bin symbol on a product means that the product may not be disposed of to household waste containers. Recycling of wastes helps to protect the environment. The user is obliged to transfer their used equipment to a collection point where all electric and electronic components.

## EU DECLARATION OF CONFORMITY

Hereby, we declare under our sole responsibility that **EU-F-2z v2** manufactured by TECH, head-quartered in Wieprz Biała Droga 31, 34-122 Wieprz, is compliant with Directive 2014/53/EU of the European parliament and of the Council of 16 April 2014 on the harmonisation of the laws of the Member States relating to the making available on the market of radio equipment, Directive 2009/125/EC establishing a framework for the setting of ecodesign requirements for energy-related products as well as the regulation by the MINISTRY OF ENTREPRENEURSHIP AND TECHNOLOGY of 24 June 2019 amending the regulation concerning the essential requirements as regards the restriction of the use of certain hazardous substances in electrical and electronic equipment, implementing provisions of Directive (EU) 2017/2102 of the European Parliament and of the Council of 15 November 2017 amending Directive 2011/65/EU on the restriction of the use of certain hazardous substances in electrical and electronic equipment (OJ L 305, 21.11.2017, p. 8). For compliance assessment, harmonized standards were used: PN-EN IEC 60730-2-9 :2019-06 art. 3.1a Safety of use PN-EN 62479:2011 art. 3.1 a Safety of use ETSI EN 301 489-1 V2.2.3 (2019-11) art.3.1b Electromagnetic compatibility ETSI EN 301 489-3 V2.1.1:2019-03 art.3.1 b Electromagnetic compatibility ETSI EN 300 220-2 V3.2.1 (2018-06) art.3.2 Effective and coherent use of radio spectrum ETSI EN 300 220-1 V3.1.1 (2017-02) art.3.2 Effective and coherent use of radio spectrum

Wieprz, 17.06.2021

*Paweł Jura* *Janusz Master*  
Paweł Jura Janusz Master  
Prezesi firmy

## TECHNICAL DATA

### EU-F-2z v2

Power supply	230V ± 10% / 50Hz
Maximum power consumption	0,5W
Humidity measurement range	10-95% RH
Room temperature adjustment range	5°C ÷ 35°C

### EU-MW-3

Power supply	230V ± 10% / 50Hz
Operation temperature	5°C ÷ 50°C
Maximum power consumption	<1W
Potential-free cont. nom. out. load	230V AC / 0,5A (AC1) * 24V DC / 0,5A (DC1) **
Operation frequency	868MHz
Max. transmission power	25mW

\* AC1 load category: single-phase, resistive or slightly inductive AC load.

\*\* DC1 load category: direct current, resistive or slightly inductive load.

## DESCRIPTION

The EU-F-2z v2 room regulator is intended for controlling the heating device. Its main task is to maintain the pre-set room temperature by sending a signal to the heating device when the room temperature has been reached.

Two colour versions are available: black and white.

### Controller assets:

- large, easy-to-read display
- front panel made of glass
- built-in temperature and humidity sensor
- intended to be mounted in a frame

Examples of compatible frames:

**TECH Controllers dedicated glass frame - Sinum FG**

or

Berker - S.1, B.1, B.3, B.7  
 Jung - AS, A500, A PLUS, A CREATION  
 Gira - STANDARD 55, E2, EVENT, ESPRIT, PROFIL55, E22  
 SIEMENS - DELTA LINE, DELTA VITA, DELTA MIRO,  
 Kopp - ALASKA  
 SCHNEIDER - SYSTEM M-PLAN, SYSTEM M-ELEGANCE, M-PURE, M-SMART

Before purchasing a given frame, please check the dimensions carefully as the above list may change!

**We recommend purchasing the FG frame, which is dedicated to regulators manufactured by TECH Controllers.**

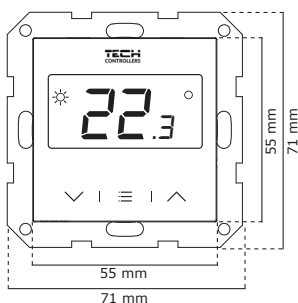
## HOW TO INSTALL

The regulator should be installed by a qualified person.

### WARNING

- Risk of fatal electric shock from touching live connections. Before working on the controller switch off the power supply and prevent it from being accidentally switched on.
- Incorrect connection of wires may damage the regulator!

The diagram below illustrate how particular the regulator should be mounted:



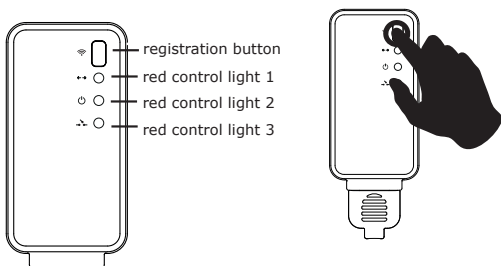
The EU-F-2z v2 regulator communicates with the heating device by means of a radio signal sent to the receiver. The receiver is connected to the heating device using a two-core cable. It communicates with the room regulator using a radio signal.

The receiver has three control lights:

- red control light 1 – signals data reception;
- red control light 2 – indicates receiver operation;
- red control light 3 – goes on when the room temperature fails to reach the pre-set value – the heating device is switched on.

### NOTE

In case of no communication (e.g. due to no power supply), the receiver automatically disables the heating device after 15 minutes.



## MENU FUNCTIONS

In order to enter the regulator menu, press and hold the MENU button. Next, use the buttons  $\wedge$   $\vee$  to switch between functions.

### 1. Operation mode

The Out function enables the user to choose one of the regulator operation modes: heating (HEA) or cooling (Coo). Select Out and when the screen starts flashing, press the Menu button.

The screen shows available operation modes (Coo, HEA). Use the buttons  $\wedge$  or  $\vee$  to select the mode. In order to confirm changes, wait for about 5 seconds or press the Menu button.

### 2. Exit the menu

To exit the menu, select the Ret option. The screen flashes for 5 seconds and exits the menu.

### 3. Factory settings

The Def function enables the user to restore factory settings. Select this function and when the screen starts flashing, press the Menu button. Next, the regulator asks if you want to restore factory settings (YES/NO). Select the answer using one of the buttons  $\wedge$  or  $\vee$ . In order to confirm, wait for about 5 seconds or press the Menu button.

### 4. Relays

This function is used to display the range of the relays 1-6 (r1) in percent, remove relays (unr) as well as activate and return to the main screen view (rEt).

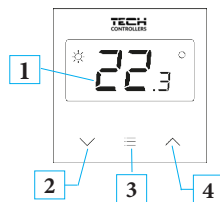
### 5. Min/Max pre-set temperature

This function enables the user to define the minimum (T1) and the maximum (T2) value of the pre-set room temperature. Select this function and when the screen

## HOW TO USE THE CONTROLLER

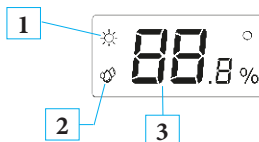
### REGULATOR DESCRIPTION

1. Display - current room temperature/humidity
2. Button  $\vee$
3. Button  $\equiv$
4. Button  $\wedge$

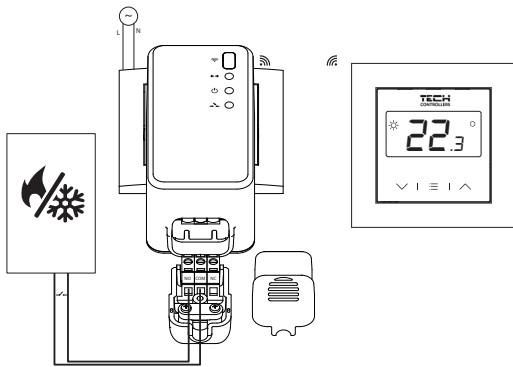


### DISPLAY DESCRIPTION

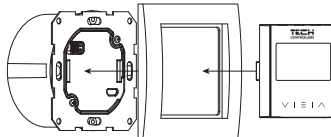
Current temperature is displayed on the screen. Use the Menu button (in the middle) to display current humidity.



1. Sun icon
2. Humidity icon
3. Current humidity



How to install particular elements:



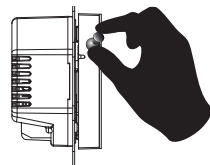
## HOW TO CHANGE THE PRE-SET TEMPERATURE

The pre-set zone temperature may be adjusted in the EU-F-2z v2 room regulator by means of buttons  $\wedge$   $\vee$ . During inactivity, the screen displays current temperature. Press one of the buttons  $\wedge$  or  $\vee$  to display the pre-set temperature value - the digits start flashing. Use the buttons  $\wedge$   $\vee$  to adjust the value.

When a sun icon appears next to the temperature value, it means that the pre-set room temperature has been reached and heating has been disabled. If the sun icon is flashing, the room is being heated and the pre-set temperature hasn't been reached yet.

## HOW TO REGISTER THE REGULATOR

In order to register the regulator, press briefly the registration button on the right side of the regulator housing. The screen will display **REg**. Next, press the communication button on the receiver. If the registration has been successful, the screen will display **SUC**. **Err** displayed on the screen means that an error occurred during the registration process.



### NOTE

In order to display the software version number, press and hold the registration button on the right side of the regulator.

starts flashing, press the Menu button. Use the buttons  $\wedge$  or  $\vee$  to adjust the value. In order to confirm changes, wait for about 5 seconds or press the Menu button.

### 6. Auto-lock

The Loc function enables the user to activate the key lock. Select Loc and when the screen starts flashing, press the Menu button. Next, the regulator asks if you want to activate the key lock (YES/NO). Select YES using one of the buttons  $\wedge$  or  $\vee$ . Wait 5 seconds to confirm. When the lock is active, the keys are locked after a few seconds of inactivity. To unlock, press and hold both buttons  $\wedge$   $\vee$ . When the screen displays Loc, select this option again and change it to NO.

### 7. Calibration

The Cal function enables the user to calibrate the sensor within the range of -10°C to +10°C. Select Cal and when the screen starts flashing, press the Menu button. The screen displays current calibration value. Use the buttons  $\wedge$   $\vee$  to adjust the value.

### 8. Hysteresis

The His function enables the user to set the room temperature hysteresis within the range of 0,2°C to 4°C. Room temperature hysteresis defines the pre-set temperature tolerance in order to prevent undesired oscillation in case of small temperature fluctuation.

Example: Pre-set temperature : 23°C Hysteresis: 1°C  
 The room regulator reports that the temperature is too low when the room temperature drops to 22 °C.

In order to define the pre-set temperature hysteresis, use the buttons  $\wedge$  or  $\vee$  and select a desired value. In order to confirm changes, wait for about 5 seconds or press the Menu button.